

GB/T 7713.1-2006

GB3100-1993

GB3101-1993

GB/T 7714-2015

1.

Times New Roman

XXXX

Times New Roman

Linux MacOS

Windows

Windows

Liberation Serif Times

Times New Roman

2.

1

Times New Roman

2

3

4

5

6

7

-

- 16 -

Times New Roman

3.

A4

4.

1

Times New Roman

2

20

10

Times New Roman

3

20** **

20** **

Times New Roman

1

6.

1

2

1.5

1

2

Times New

Roman

Times New Roman

Times New Roman

1

22

3

Times New Roman

4

7.

1

A4

3

2

2.5

2

1

2

22

3

Times New Roman

	0.5			1	
	1				
				1	
					Times New Roman
	0.5			1.1	
	1				Times New Roman
	0.5			1.1.1	
		1			Times New Roman
	0.5		2	1	
					Times New Roman
		2			
4	A4				
8.					
		20		3	
		GB/T 7714-2015	-		
			1-2		
				4	
					Times New Roman
1.5		1	1	2	
9.					
	1				

2
3
4

A B
A.1 A.1.1

A-1 B-2 C-3

10.

11.

‡ 9 04x 7NÈ I ? Â(x È8\$BR µ â *(½È ‡ YS(@ {P • 1/)0-7' ñœ"‡fû '

10

1

13.

1

Times New Roman

Times New Roman

1

80%

2-1

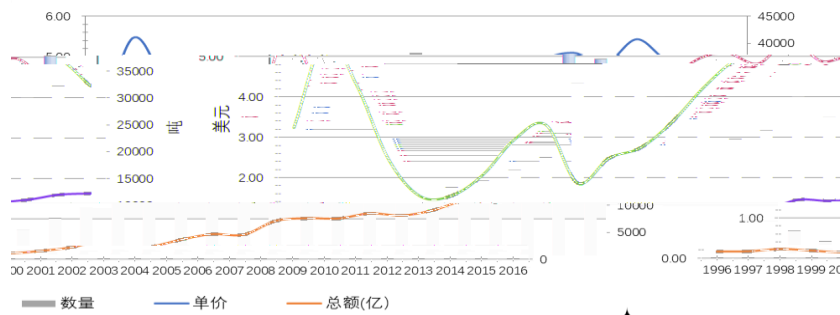
1

Times New Roman

a b c

Times New Roman

2-1



<https://comtrade.un.org/data/>

HS4

0801-0814

2-1 1996-2016

2

1.5 1

2-1

1

Times New Roman

2-1

2-1

Times New Roman

2-1

2008	316663.815	-	29949.631	-
2009	309735.157	-2.19	26919.380	-10.12
2010	309904.372	0.05	22162.729	-17.67
2011	329848.907	6.44	23835.775	7.55
2012	282110.538	-14.47	30062.873	26.13
2013	272463.064	-3.42	26153.092	-13.01
2014	276847.795	1.61	30106.789	15.12
2015	289620.803	4.61	32264.159	7.17
2016	287783.999	-0.63	37875.540	17.39

<https://comtrade.un.org/data/>

HS4

0801-0814

Times New Roman

1

80%

a b c

Times New Roman

3

Times New Roman

4-1

+ -

14.

1

3000

2

1-3

3

4

5

15.

Word LaTeX

PDF



20**

未

()

20** **

20** **

()

未

未

()

下

下

未

未

同

未

年

未

()

未

()

未

共

未

同

未

()

共

指

共

年

下

未

未

未

()

未

未

指

共

年

未

1-2

()

()

(GB/T 7714 2015)

-

1.

例: (1983)

2.

例:

3 1(1962)

3.

a b c

例:

(1988a, 1988b, 1989)

4.

))

例: (1998) (Smith and

Bruns 1987)。

5.))

例:

(1990)

(Harver et al. 1969)

6.

例: (Alliso et al. 1971; Bjerknes 1969, 1973; Doberitz 1969; Doberitz et al. 1967)

7.

例:

1996 1194)

1996 354)

1. ()

2.

3.

4. ()

5.

6. ()

7. 1 1 2

8.

1.

. . (). ().

例:

. 1992. . 108

2.

. . . (). .

例:

. 1996. . ().

: 468~471

Ross J. 1975. Radiative transfer in plant communities. In:Monteith J L. Vegetation and the Atmosphere .Vol

1.London: Academic Press 13~52

3.

. . . () ()

例:

Echeverria M, Scambato A A, Sannazzaro A I, Maiale S, Ruiz O A, Menéndez A B. 2008. Phenotypic plasticity with respect to salt stress response by *Lotus glaber*: the role of its AM fungal and rhizobial symbionts. *Mycorrhiza*, 18(6-7): 317~329

Spar J. 1973a. Some effects of surface anomalies in a global general circulation model. *Mon Wea Rev*, 101: 91~100

Spar J. 1973b. Transquatorial effects of sea-surface temperature anomalies in a global general circulation model. *Mon Wea Rev*, 101: 554~563

4.

. - - .

例:

. 2000-11-12. DNA . 7

5.

. . . (). .*** .

例:

. 1896. .1(2). . 1996. : : 102

6.

. . . [- -]

例:

.2001. .

<http://www.creader.com/news/20011219/200112120019.html>[2002-04-15]

7.

. . . .

例:

. 1993-04-14. . 92214985

8.

. . . . [()] .

例:

. 2001. . [] .

20*****



20** 未 ()

**

20** **

20** **
